

# THE PROPERTY LAB



**3605/38 York Street Sydney NSW**

**2**  **2** 

Impeccably crafted with an unsurpassed attention to detail and a stylish artistic aesthetic, this exquisite apartment defines sophisticated living. In an ultra exclusive setting, this beautiful contemporary offering opens to embrace breathtaking city and harbour views.

**Type** : Apartment

**Price** : \$1,800,000 to \$1,980,000

**View** : <https://www.thepropertylab.com.au/sale/nsw/sydney-city/sydney/residential/apartment/8163883>

Occupying an elevated position within the exclusive York & George, this impressive address offers a stunning retreat with an intimate sense of privacy, security and luxury.

- Intuitively designed with an emphasis on level luxury living
- Inspiring views overlooking the CBD from an elevated position
- Flowing open living ideal for relaxed in/outdoor entertaining



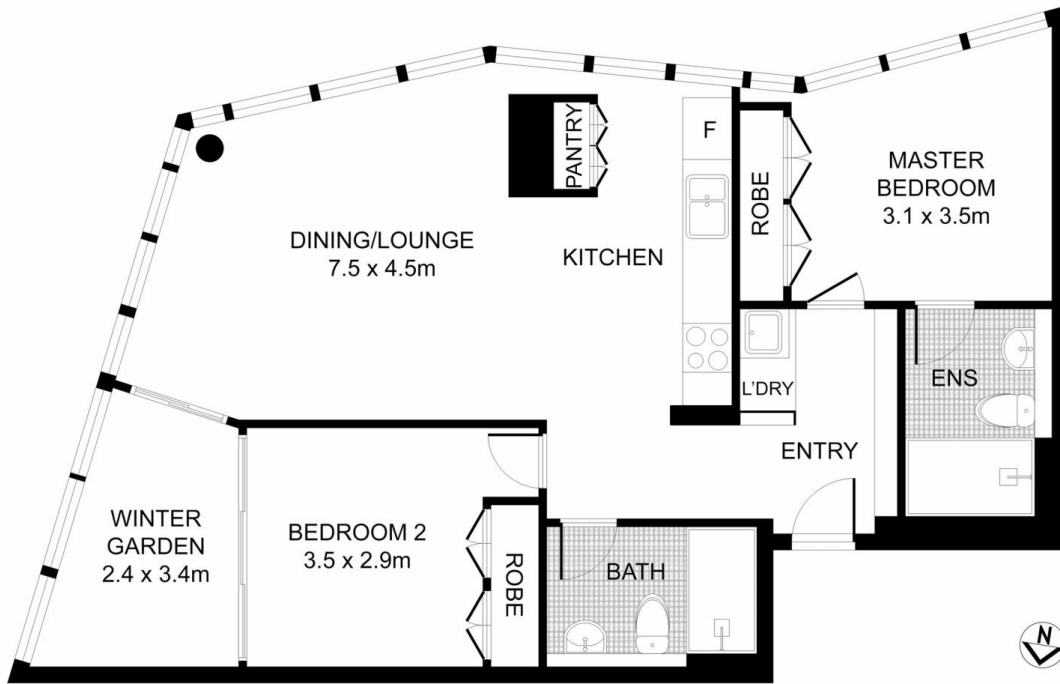
**Gerard Marino**  
1300 048 125



**Antoine Biger**  
1300 048 125

[For full version visit the website](https://www.thepropertylab.com.au)

<https://www.thepropertylab.com.au>



## 3605/38 YORK ST, SYDNEY



DISCLAIMER: ALL DIMENSIONS ARE AN APPROXIMATION FOR MARKETING PURPOSES AND NO GUARANTEE IS GIVEN WITH RESPECT TO ACCURACY.