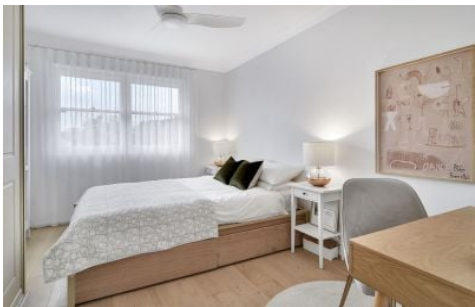


THE PROPERTY LAB



15/67 Shadforth Street Mosman NSW

2  1  1 

Nestled in a boutique building and quietly tucked away at the rear, this top floor light filled address promises an enviable lifestyle opportunity that will ensure your peace, privacy and comfort, all within a picture-perfect setting.

View : <https://www.thepropertylab.com.au/lease/nsw/nor-th-shore-lower/mosman/residential/apartment/8033508>

- North east living area filled with natural light, a/c
- Two well-sized bedrooms with ceiling fans
- Second room ideal for a nursery or home office
- Updated kitchen, induction stove and dishwasher
- Stylish tiled bathroom with heated towel rail
- Adjoining internal laundry, with dryer included
- New roller blinds, curtains and floorboards throughout
- Off street covered parking with lockable storage shed



Gerard Marino
1300 048 125

This is an ultra-convenient address within walking distance of an array of cafes, eateries, shops and transport options sure to impress the most discerning tenant.

<https://www.thepropertylab.com.au>



15/67 Shadforth Street, Mosman

Disclaimer: Plans shown are for presentation purposes and are not part of any legal document. All measurements and figures are approximate.

THE **Property**LAB