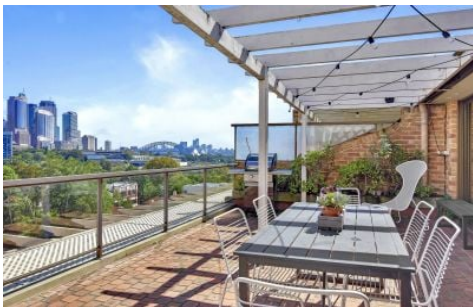


# THE PROPERTY LAB



**26/167 Brougham Street Woolloomooloo NSW**

**3 🛏 2 🚿 1 🚗**

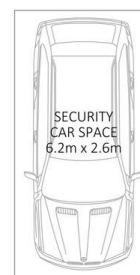
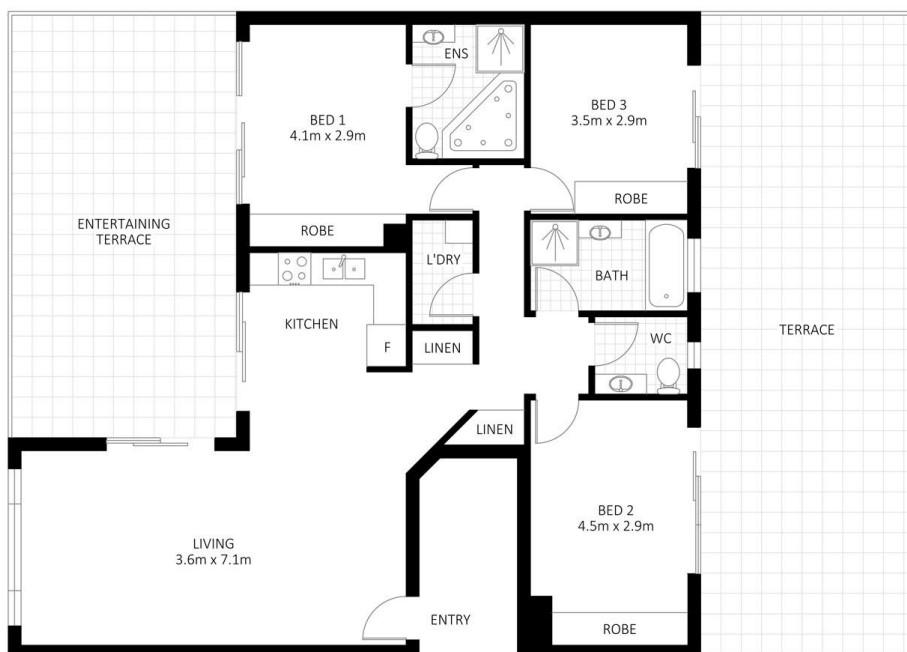
The spectacular surrounds of the Sydney city skyline, Harbour Bridge and Opera House form a dazzling backdrop to this light filled executive apartment. Stylish in its design and generous in its layout, it offers the ultimate city-edge lifestyle with flowing interiors, quality finishes and a versatile floor plan.

- Prized position with spectacular panoramic views
- Two entertainers terraces, embrace in/outdoor living
- Sizeable bedrooms include storage, master with ensuite
- Ensuite benefits from separate bath and shower
- Sleek kitchen fitted with quality appliances
- Secure under cover parking for one vehicle
- Split system air-conditioning, intercom entrance
- Walk in laundry with shelving and tub, washer and dryer included

**View :** <https://www.thepropertylab.com.au/lease/nsw/sydney-city/woolloomooloo/residential/apartment/8027431>



**Gerard Marino**  
**1300 048 125**



26/167-183 Brougham Street, Woolloomooloo

Disclaimer: Plans shown are for presentation purposes and are not part of any legal document. All measurements and figures are approximate.

THE **Property** LAB